



Product Highlights

for *cellular* research

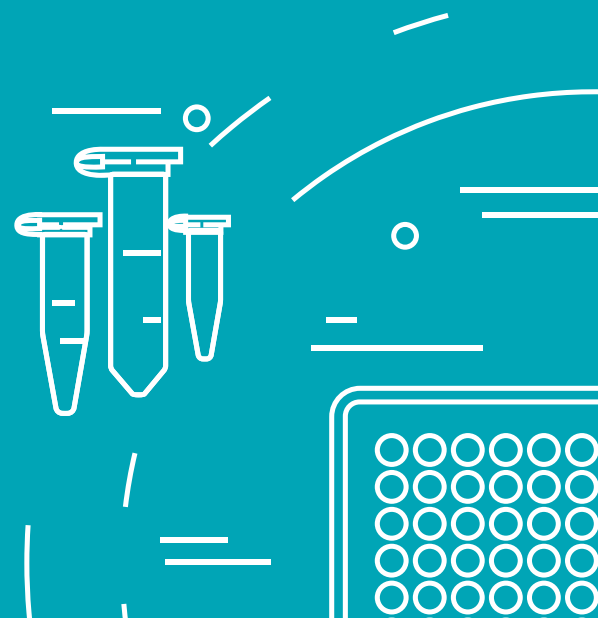


Your research is our purpose

Captivate Bio specializes in the development and delivery of innovative cell culture tools and reliable US-based media manufacturing services to the research, therapeutic, and healthcare communities at an affordable price to all.

We are obsessively passionate about the possibilities of cellular technologies and in our ability to empower researchers with the scientific tools to create a better world.

Let's create captivating science, **together.**



Our scientific solutions

Ensure the quality of your cells with media, supplements, and custom services designed to fit seamlessly into every step of your research. Here are just a few examples of the scientific solutions we offer.

General Cell Culture	3
Animal Sera and FBS	3
Media and Reagents	4
Mycoplasma Detection	5
screenMATRIX™	6
Human Cytogenetics	7
Stem Cell and Cell Therapy Research	9
Small Molecules and Biomatrices	11
Human Platelet Lysate	12
Covid-19 Research	13

Tools for General Cell Culture

Animal Sera

Sera including Fetal Bovine Serum (FBS) is one of the most commonly used supplements for cell-based applications. Trusted by both academic and industry customers, Captivate Bio has become the go-to supplier for premium and specialty serum solutions with fast service and consistent supply.

Additional lower-cost alternatives to FBS are also available including newborn calf serum and donor donkey, goat, and horse serum.

- **Market-leading prices on premium FBS**
- **Comprehensive quality testing**
- **Lot reservation program available**



High-quality FBS

All FBS products have full traceability back to the original source. Finished products undergo extensive quality, performance, and analytical testing. Each serum lot is tested to ensure quality and sterility. Low endotoxin and hemoglobin levels reflect the care with which the serum is collected and processed.

Captivate Bio - Fast service, reliable and consistent supply

Premium US origin	Premium USDA origin	Specialty US or USDA origin
Highest quality FBS	High quality, economical FBS	Post-filtration treatments and add-on testing
Subjected to extensive biochemical analysis	Excellent choice for research applications	Gamma irradiation further reduces the risk of viruses present in serum
Low endotoxin and hemoglobin specifications	Endotoxin and hemoglobin are tested and reported	Heat inactivation can be effective in reducing some adventitious agents. Charcoal, dialyzed, exosome-depleted are available upon request.



Cell Culture Media

Captivate Bio offers the most common cell culture media and supplements off-the-shelf which are designed to promote cell growth, proliferation, and maintenance of a variety of cell types including mammalian cells and stem cells. At Captivate Bio, we are dedicated to delivering excellence and all our classical media products are manufactured according to good manufacturing practices (GMP) to help ensure product performance.

Captivate Bio's classical cell culture media products include various DMEM, DMEM/F12, RPMI 1640, and MEM formulations.



Balanced Salt Solutions

Balanced salt solutions including PBS, DPBS, and HBSS are formulated for the irrigation, washing, and the dilution of a variety of cell types which are designed to provide a pH buffering system and maintaining the osmotic balance when using a cell culture medium. Captivate Bio balanced salt solution's essential function is to maintain pH and osmotic balance as well as provide your cells with water and essential inorganic ions. Captivate Bio salt solutions are available standard formats as well as custom formulations and formats.

Dissociation Reagents

Soybean Trypsin Inhibitor is an effective serum-free, xeno-free alternative to inactivating trypsin for the crucial protection of cells from long-term exposure to trypsin. We offer Soybean Trypsin Inhibitor (50x concentration) in 20 mL bottles.

Accutase® Cell Detachment Solution is a ready-to-use liquid consisting of a proprietary mixture of proteolytic and collagenolytic enzymes for use in dissociation of cells from standard and adhesion-coated plasticware. Ideal replacement for trypsin and for use with stem cells including MSCs and hPSCs.

Tools for Mycoplasma Detection

Minimize the risk of mycoplasma contamination in your cultures

The EZ-PCR™ Mycoplasma Detection Kit contains a ready-to-use PCR reaction mix that includes highly-optimized mycoplasma-specific primers, dNTP mix, and Taq polymerase. Internal and positive controls are included to test for false negatives and for easy interpretation of test results.

With a ready-to-use format and easy-to-follow protocol, samples can be prepared in as little as 10 minutes with accurate results seen in only a few hours.

Features & Benefits

- Highly-sensitive PCR-based assay
- Save time with rapid and reliable results
- Ideal for routine testing
- Detects over 90 different species

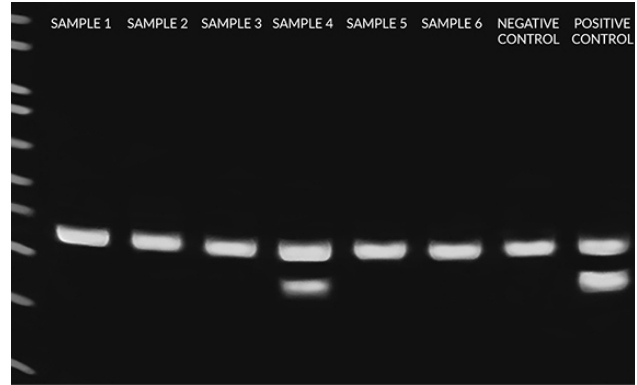


Figure 1: Gel electrophoresis results obtained following PCR reaction preparation and amplification using the EZ-PCR™ Mycoplasma Detection Kit. Eight total reactions, including six samples, one negative control, and one positive control were tested, each of which contain the internal control to rule out PCR inhibition (i.e. false negatives). As shown, Sample 4 produced a mycoplasma-positive band at 270bp in addition to the internal control band at 357bp, while Samples 1, 2, 3, 5, and 6 produced only internal control bands and are thus negative for mycoplasma. Image courtesy of WiCell Research Institute.

Mycoplasma Detection Methods Comparison Chart

Method	Sensitivity	Advantages	Disadvantages
Direct DNA Stain	Low	Rapid, cheap	Difficult to interpret
Indirect DNA Stain	High	Easy to interpret	Time-consuming
Broth and agar culture	High	Sensitive	Slow, expert interpretation
PCR	High	Rapid, easy to interpret	Requires optimization
Nested PCR	High	Rapid	More likely to give false-positives
ELISA	Moderate	Rapid	Limited range of species detected
Autoradiography	Moderate	Rapid	Difficult to interpret
Immunostaining	Moderate	Rapid	Difficult to interpret

screenMATRIX™

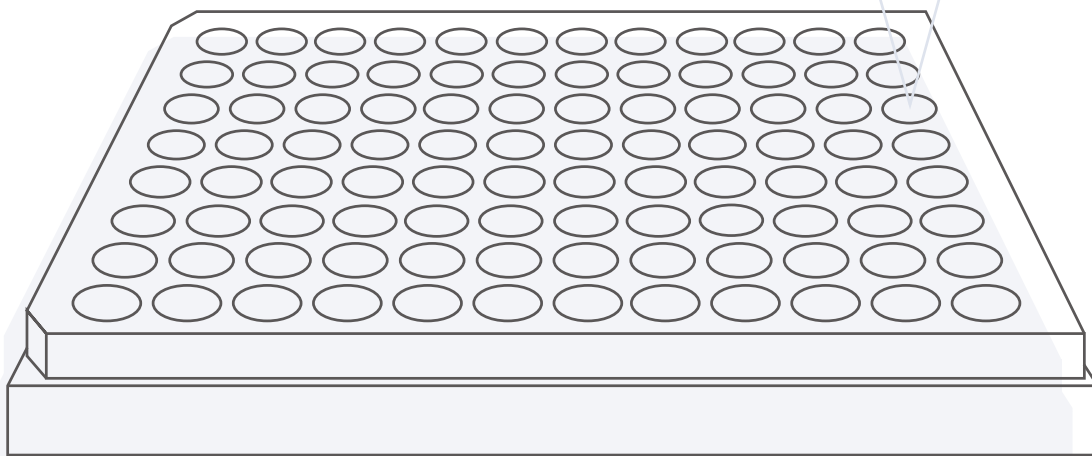
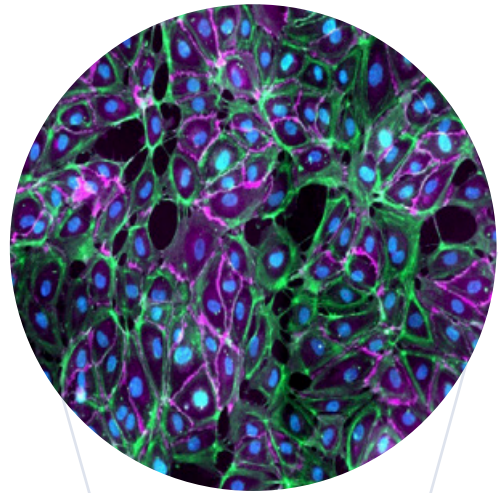
A simple tool to find the best environment for any cell type

A new rapid, 96-well screening plate which mimics 96 different adhesion proteins including fibronectin, vitronectin, laminin, and collagen. Discover which biological ligands are responsible for cell adhesion, differentiation or changes in your cell phenotype.

The screenMATRIX™ is ideal for testing a large variety of cell microenvironments at once.

Features & Benefits

- One simple tool, just seed your cells and go
- Once an environment is identified, customize on your choice of cultureware
- Compatible with plate readers and high resolution imaging



Tools for Cytogenetics

Save time and effort with reagents for rapid analysis

Cytogenetics is the study of normal and abnormal chromosomes. Sometimes called chromosome analysis or karyotyping, cytogenetics involves testing samples of tissue, blood, or bone marrow for signs of a genetic disease or condition or some types of cancer.

Backed by over 35 years of expertise in cell culture manufacturing and clinical research, Captivate Bio offers a wide range of specialized products from Sartorius in addition to classical media, FBS, balanced salt solutions, and reagents, as well as custom media manufacturing services.

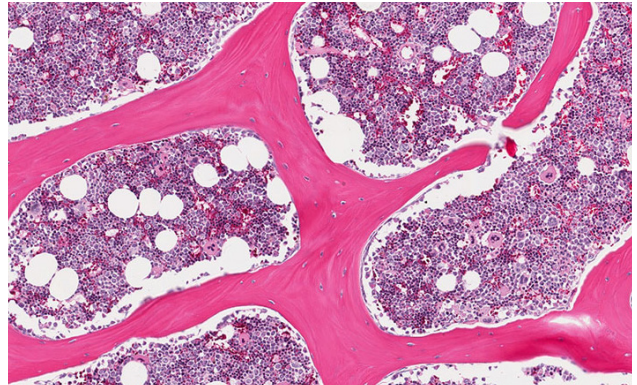
Features & Benefits

- Bulk pricing and lot reservations programs
- cGMP manufactured and performance tested



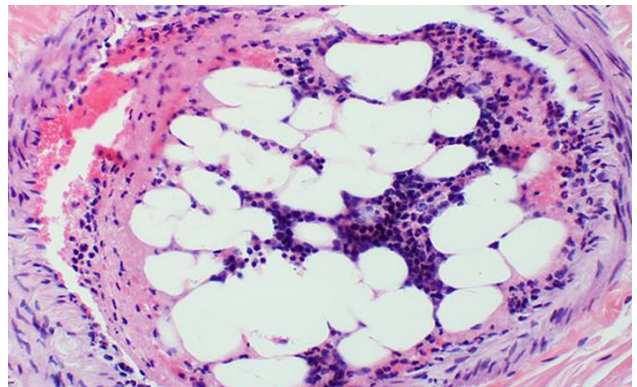
Potassium Chloride Solution

Sartorius' Potassium Chloride (KCl, or potassium salt) is a hypotonic solution prepared in water for use in the preparation of blood lymphocyte chromosomes. Potassium Chloride is suitable for PCR, molecular biology, protein chemistry and biochemical applications



Colcemid Solution

Sartorius' Colcemid Solution is prepared in PBS. It is used for arresting mitotic cultured cells in metaphase so the chromosomes can be separated for chromosome analysis during lymphocyte karyotyping and in vitro diagnostic procedures. Colcemid Solution prevents spindle formation during mitosis, causing metaphase arrest.



Cell Synchronization Kit

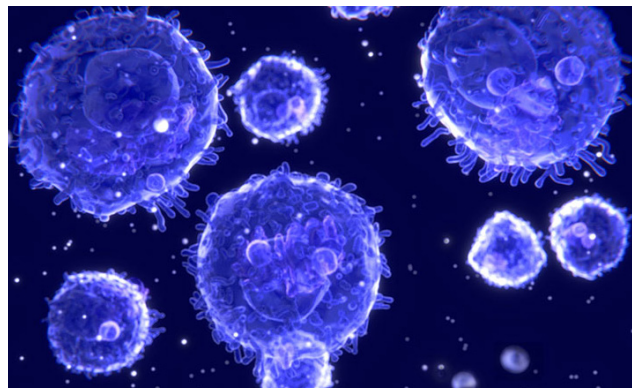
The Sartorius Cell Synchronization Kits a high-resolution cytogenetic analysis kit that enables a more detailed analysis of karyotype or chromosomal abnormalities.

DPBS

Captivate Bio's DPBS is a common solution used for washing cells as well as preparing cell culture reagents. DPBS without calcium and magnesium is often used in trypsin solutions.

FBS, Heat-Inactivated

Heat-inactivated FBS is especially suited for immunological work and intended for researchers who want to avoid confounding effects in immune response studies using immune cell culture. Captivate Bio offers lot reservations and bulk supply.



Stem Cell and Cell Therapy Research

High quality, translation-ready tools for stem cell research and cell therapy applications

The transition from stem cell research to clinical applications requires access to consistent and reliable products. High quality cell culture media, reagents and services are essential in the development of potential cell therapies.

Captivate Bio's growing portfolio of stem cell culture media, stem cell reagents, small molecules and custom media manufacturing, as well as our new biomatrices offers powerful options for scientists in stem cell and therapeutic research.

Features & Benefits

- Reliable and consistent supply
- High quality, low price programs
- Simplified custom media manufacturing
- Small and large-scale project planning
- Custom sourcing available



Serum and Media for the Culture of Stem Cells

Captivate Bio's growing portfolio of specialized basal stem cell media and FBS are ideal to support the growth of hPSCs, MSCs and a variety of mammalian cells. General stem cell basal media includes DMEM, DMEM/F12, RPMI 1640, and a-MEM media. Premium MSC- and ESC-qualified FBS is also available upon request.

Features & Benefits

- Reliable, lot-to-lot consistency
- High quality, low price promise
- Manufactured in ISO 13485 certified facilities

All of Captivate Bio's cell culture media are manufactured in the US and available in bulk or custom pack sizes.



Custom Services for Stem Cell Research

Based on your cell type or application, the exact media formulation or product you need for your research may not be available. If you can't find what you need, our team is happy to help. We will work with you to deliver your custom media and source reagents to meet your requirements. Whether it's as simple as a change in formulation or sourcing small molecules, take advantage of our resources and global network to overcome your challenges.

- Pilot and large-scale manufacturing
- Supply chain and project management
- Standard custom media completed in 4-8 weeks
- Manufactured in ISO 13485 certified facilities

Contact our Customer Service team to inquire about our custom media manufacturing services.



Small Molecules

Captivate Bio's portfolio of small molecules for stem cell research are powerful tools capable of modulating and fine-tuning key pathways and targets within a cell. All Captivate Bio's small molecules are rigorously tested as well as third-party validated to guarantee highest purities and chemical structure consistency.

Small molecules include BIRB796, CHIR99021, DAPT, SB431542, LDN193189, and Y27632 ROCK inhibitor. All small molecules are available in multiple formats. Please contact our team for more information or to inquire about custom sourcing.

Features & Benefits

- Third-party tested and validated
- Low price and fast delivery
- High purity and consistent activity



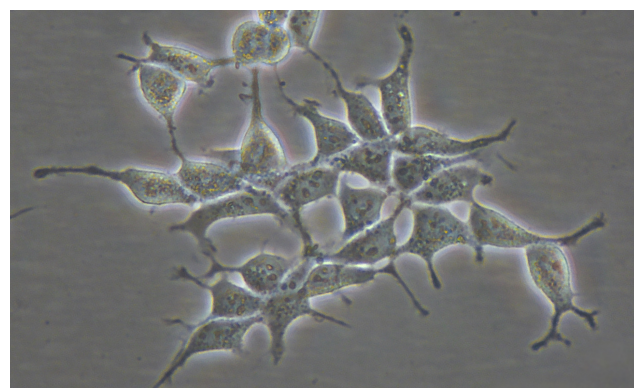
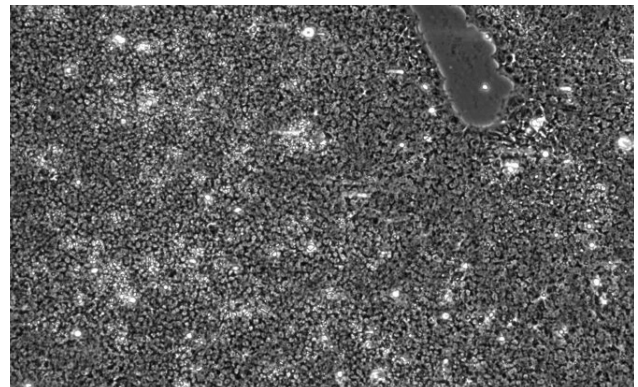
myMATRIX™ Biomatrices

Captivate Bio offers a new portfolio of a chemically defined cell adhesion-promoting microenvironments offered as pre-coated cultureware. The myMATRIX™ portfolio of ready-to-use and animal component-free biomatrices promote cell expansion of human iPSCs and MSCs in serum-free and xeno-free media. myMATRIX™ also increases cell yields and maintains cell pluripotency and genetic stability.

Products are available in 6- and 96-well plates or T25 and T75 flasks.

Features & Benefits

- Rapid cell proliferation with high viability
- Serum-free and xeno-free culture
- Mimics adhesion proteins such as fibronectin, laminin, vitronectin, and collagen



Human Platelet Lysate

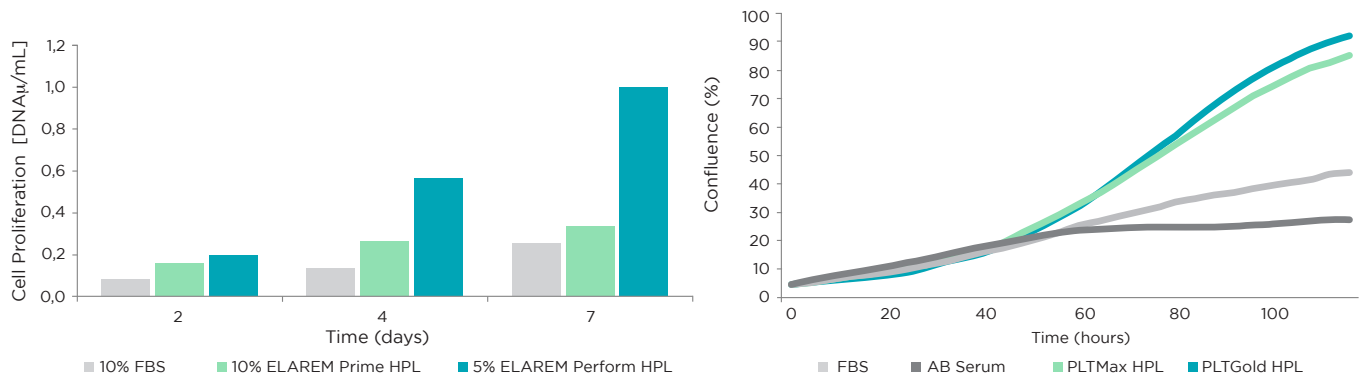
Reduce time, cost, and variability in your cultures

Platelets play an important role in tissue repair and wound healing within the body. The growth factors and cytokines naturally found in platelet-rich plasma are contained within extracted platelet lysate solution. HPL is an effective, high-protein supplement for the expansion of a variety of human cell types, including MSCs, ECs, iPSCs, T cells, and more.

Captivate Bio offers one of the largest portfolio's of human platelet lysate products which enables unparalleled cell growth for stem cells and is among one of the most cost effective and natural way of growing cells. HPL is currently available in research and clinical grades, as well as pathogen inactivated and gamma irradiated formats. Brands include PLTMax®, PLTGold®, and ELAREM™ HPL products.

Features & Benefits

- Superior alternative to FBS
- Rapid and natural cell growth
- RUO- and GMP-grades with FDA master files
- Used for manufacturing in US, EU, and other clinical trials globally



Figures: Sample data shows HPL outperforming FBS and AB serum in the culture of hMSCs. Although FBS is a valuable supplement enriched with nutrients such as hormones, plasma proteins, growth factors, fibronectin, and laminin, the associated risk factors with using animal-derived supplements have raised awareness to stop its use as a growth supplement. HPL has emerged as an efficient alternative to FBS with increased proliferation which enables sufficient production of cells for potential cell therapy applications.

COVID-19 Research

Custom solutions for vero cells and vaccine research

As the global COVID-19 pandemic continues to evolve, researchers are working hard to study the mechanisms underlying SARS-CoV-2 infection. Thanks to their ongoing efforts, new insights for developing treatments, vaccines, and diagnostic tools are being made possible.

Captivate Bio offers specialty media including transport media, fetal bovine serum, HBSS, and specimen collection kits to assist in the fight against COVID-19.



Specimen VTM Collection Kits

The VTM Collection Kit (with flocked swab) offered by Captivate Bio allows for the collection, preservation and transport of viruses, such as coronavirus (COVID-19). All kits are made in the US and the viral transport media is manufactured according to CDC protocols for specimen collection and transport. Kits have an 18-month shelf-life and are stable at room temperature.

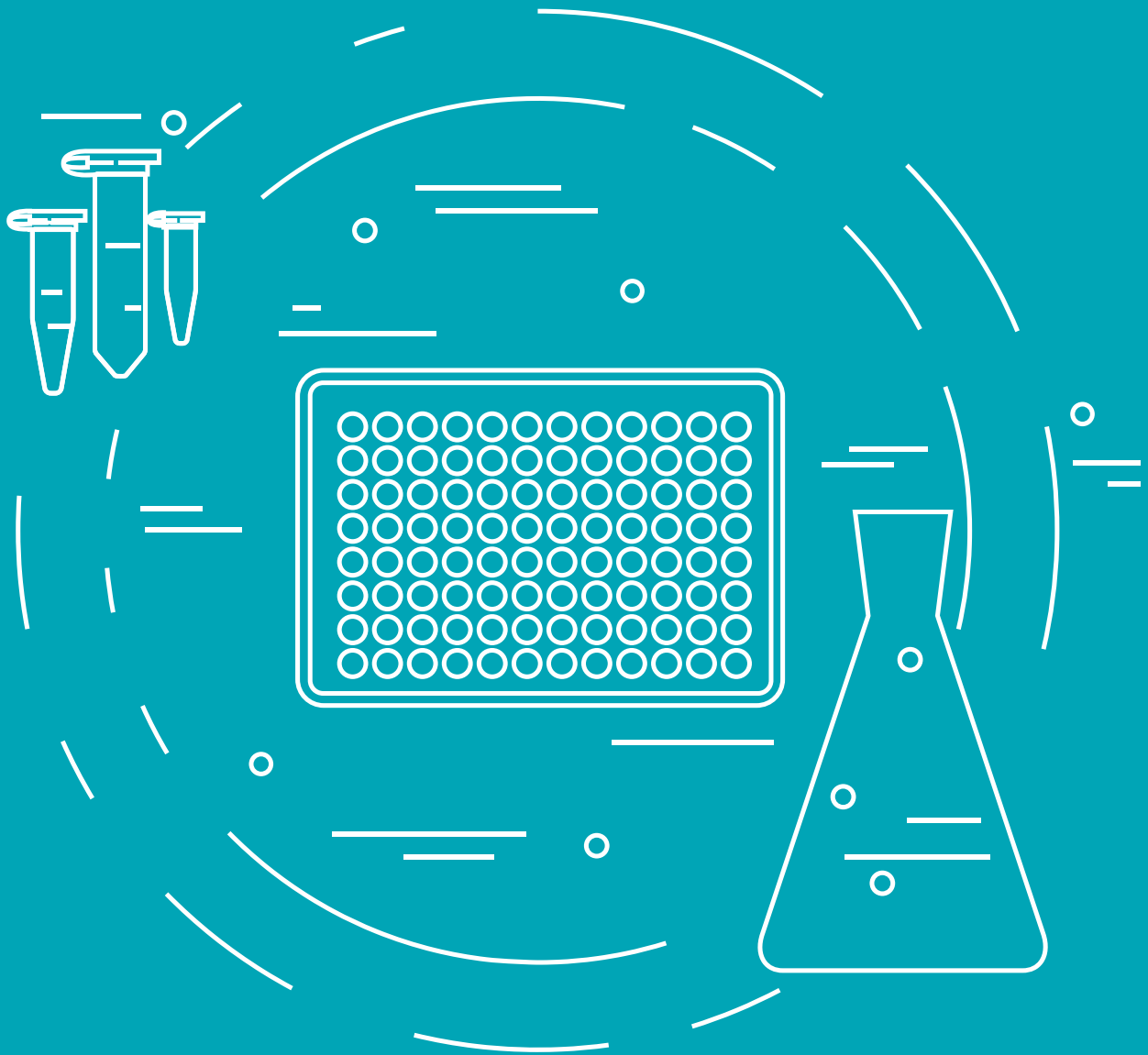


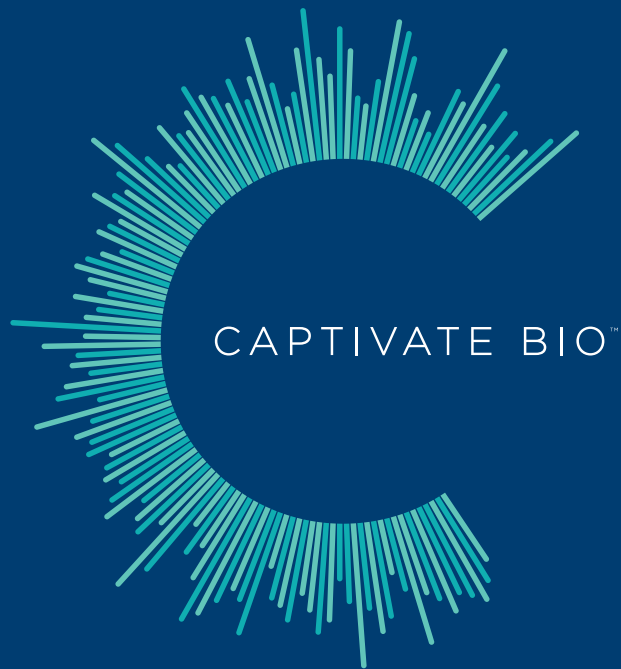
Viral Transport Media

Captivate Bio's Viral Transport Media allows for the collection and safe transport of biological specimens from the collection site to the testing laboratory. This medium is produced in the US according to CDC protocols. Currently available in 500 mL bottles. Bulk pricing and custom fill volumes are available upon request. Formulations are also available with or without phenol red.

Specialty Media

In addition to the ingredients needed for transport media, Captivate Bio offers a unique portfolio of cell culture reagents to support emerging areas of research and therapeutic discovery in the fight of new viruses such as COVID-19. Products include human platelet lysate, proteins, and classical media.





Together, we make breakthroughs happen.

Captivate Bio

142 Galen Street, 2nd Floor
Watertown, MA, 02472 USA
t (617) 607-4017
e orders@captivatebio.com
www.captivatebio.com

Mailing address

Captivate Bio
PMB #209
285 Berlin Turnpike
Berlin, CT, 06037, USA